

4ALL H50

Brochure **2023**

The Next Generation of plastic drainage systems

4ALL H50

The Next Generation

Versatile. Practical. Easy to assemble.

Drainage systems are becoming more and more important also in private spaces and **4ALL H50** channel offers a drainage solution for every situation and requirement.

This innovative channel is suitable for drainage in areas such as terraces and balconies where the installation height is limited. This is possible thanks to its low height and new technical details, such as the new side connections which make it easy to install.

4ALL H50 is available in a wide range of standard and design gratings perfectly integrated to the aesthetics of the surrounding environment.



Main features

- Certified in accordance to EN1433
- Easy to assemble
- High mechanical and chemical resistance
- Light weight
- Easy to carry
- Total height 50mm
- Plastic rail 5mm thickness
- 3 standard gratings
- 4 design gratings
- Load class: A15, B125

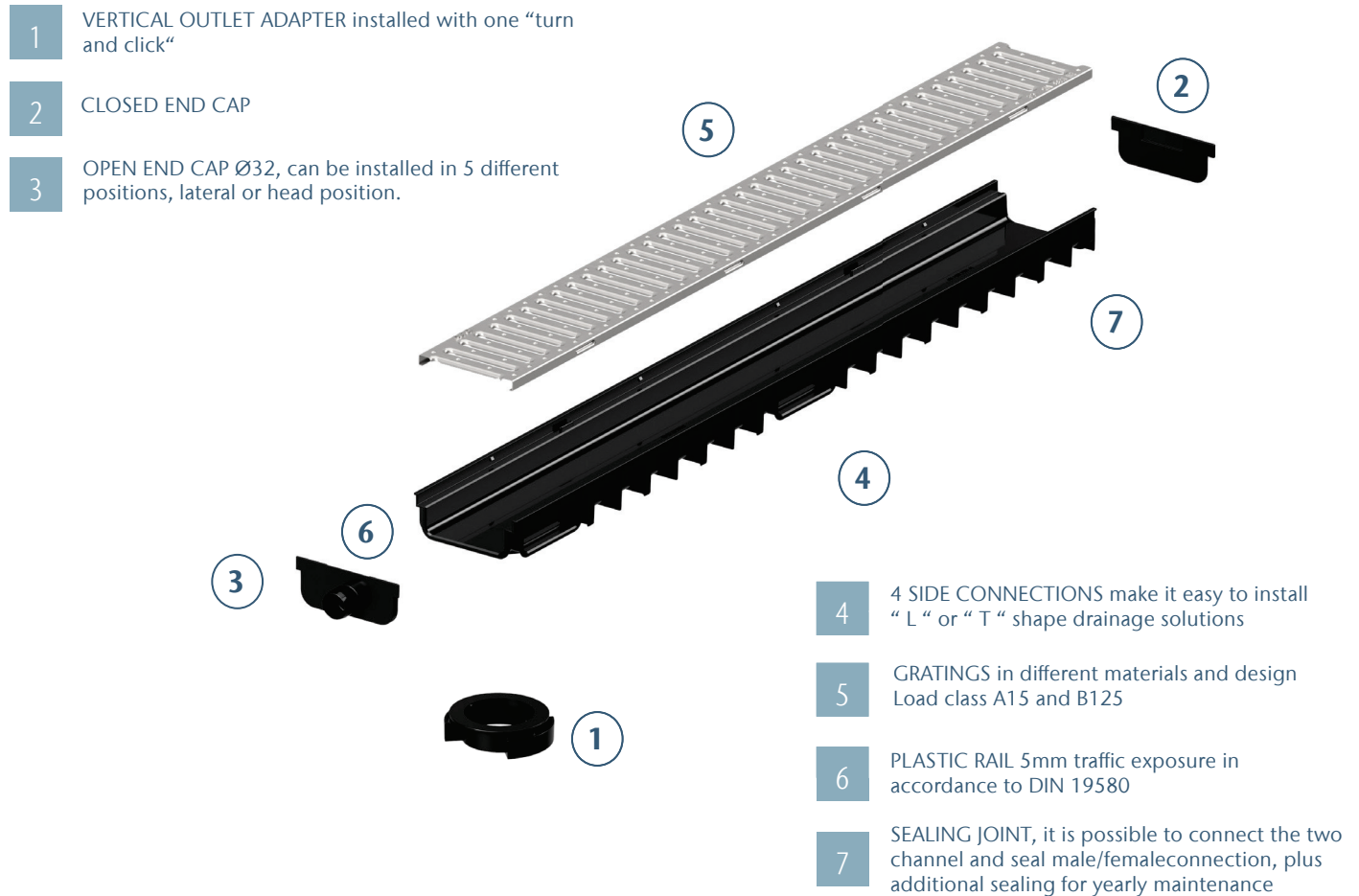
Applications

- Terraces
- Balconies
- Gardens
- Façade drainage
- Residential developments
- Low height installation
- Renovation



4ALL H50, The Innovative Design

A **complete system** with many advantages and possibilities

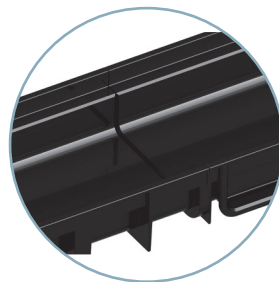


Innovative features for an easy installation

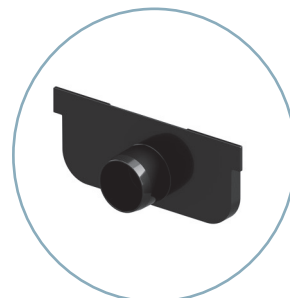
5

4ALL H50 Advantages

- The new connections allow to create T and L shape without using special pieces and without discontinuity for the drainage line
- Practical to be assembled, male and female and sealing joint in the dedicated area
- Accessories that can be used in different positions and can be used to add drainage capacity
- The low height of the channel, only 50mm total



SEALING JOINT: the connection of the two channel creates an area that can be used to position the sealant. The bituminous sealant can guarantee a perfect waterproofing of the drainage line.



OPEN END CAP can be installed in 5 different positions and it can be used in case of necessity to increase the capacity of drainage of water outflow.